



GlobalSUITE® - Critical Infrastructures Protection is a management system for critical infrastructures protection for ensuring the continuity of your services against any disaster.

“WE KNOW THAT PROTECT A CRITICAL INFRASTRUCTURE IS A COMPLEX TASK, YOU MAY TRUST IN GLOBALSUITE TO HAVE A PROTECTION SYSTEM IN AN INTEGRATED & ACCESSIBLE ENVIRONMENT ALL THE TIME.”

Main characteristics

- GAP Analysis
- Definition of Services & Processes
- Decision-making committees
- Business Impact Analysis (BIA)
- Risk Analysis & Risk Management
- Well-documented Continuity Plans
- Continuity Testing Program
- Incident Management Plans
- Crisis Management
- Incident Management
- Publication of BIA Surveys
- Balanced ScoreCard
- Training & Audit Plans
- Document Management System
- Report Management
- Project Management
- Integration with other systems of the organization
- Interconnection with other systems
- Historical Version of the Documentation
- Multilingual platform

🔍 What it is?

GlobalSUITE® - Critical Infrastructures Protection is our software that provides the implementation, management, maintenance and deployment of the management systems for critical infrastructures protection, for complying the Critical Infrastructures Protection Act (LPIC in Spain)

Moreover, you could have all requirements totally automatized for elaborating an Operator Security Plan (OSP) and the Specific Protection Plans thanks to GlobalSUITE® - Critical Infrastructures Protection. E.g., the modelling of the processes, risks analysis, continuity plans and crisis management.

🌐 Paper-free management

It allows your company to achieve the entire implementation with a paper-free management system. All the information is registered in the platform and it has a document management system that will help you to manage the whole inherent documentation to any management system.

🕒 Collaborative work

One of the main benefits of GlobalSUITE® is how it can be used among the team workers or the different users of the system, because it's a web platform.

The Risk Analysis, Business Impact Analysis (BIA) and the documentation of the company's own plans are essential parts for the implementation of your Critical Infrastructures Protection Management System and they could be done in stages and with a collaborative methodology between the different coordinators of the business units.

✅ Easy to use

It's the best quality of GlobalSUITE® - Critical Infrastructures Protection while other companies can't say the same. The learning curve is minimal for those users that don't know how to manage the standard and the management systems. We obtain clear results in a short time and we helps you in taking the right decisions.

“It's not enough with a plan, it's necessary to check how to work and to measure its maturity levels throughout the time. GlobalSUITE® - Critical Infrastructures Protection is the solution.”

Detailed Characteristics:

Definition of the Project

- Scope & Objectives
- Roles & Responsibilities
- GAP Analysis
- Services & Processes
- Initial BIA about services & products
- Decision-making committee

Business Impact Analysis(BIA):

- Definition of impacts, time scale and levels
- BIA performance by Business Processes
- Consolidation of several BIA
- Publication of Surveys for conducting BIA
- Calculation of MTPD, RTO y RPO
- Identification & Priorization of critical processes

Risk Analysis & Risk Management:

- Asset Inventory
- Risk Identification, Analysis, Evaluation and Management
- Management & Evaluation of Implemented Controls
- Configuration of methodologies for Risks & Controls
- Catalogs of Risks and Predefined Controls
- Historical version of Risk Analysis & Risk Management

Well-documented Continuity Plans:

- Definition of Disaster Scenarios
- Business Continuity Plans
- Incident Management Plans
- Response Plans & Incident Recovery

Continuity Testing Program:

- Type tests & variable reach
- Automation of Testing Exercises
- Analysis of conclusions and revision of Continuity Plans

Crisis Management:

- Serious Incident Management and Plan Activation
- Automation of the Plan implementation
- Analysis of conclusions and revision of Crisis Management Plans

Management of Incidents, Non Conformities & Correctives/Preventives

- Registration & Priorization
- Monitoring
- Traceability between elements

Balanced ScoreCard

- Management of Business Objectives
- Indicators & Metrics Management
- Catalogs of Indicators & Automatic Metrics
- Alerts by email
- Strategic Visual Map
- Assessment of the results

Document Management System

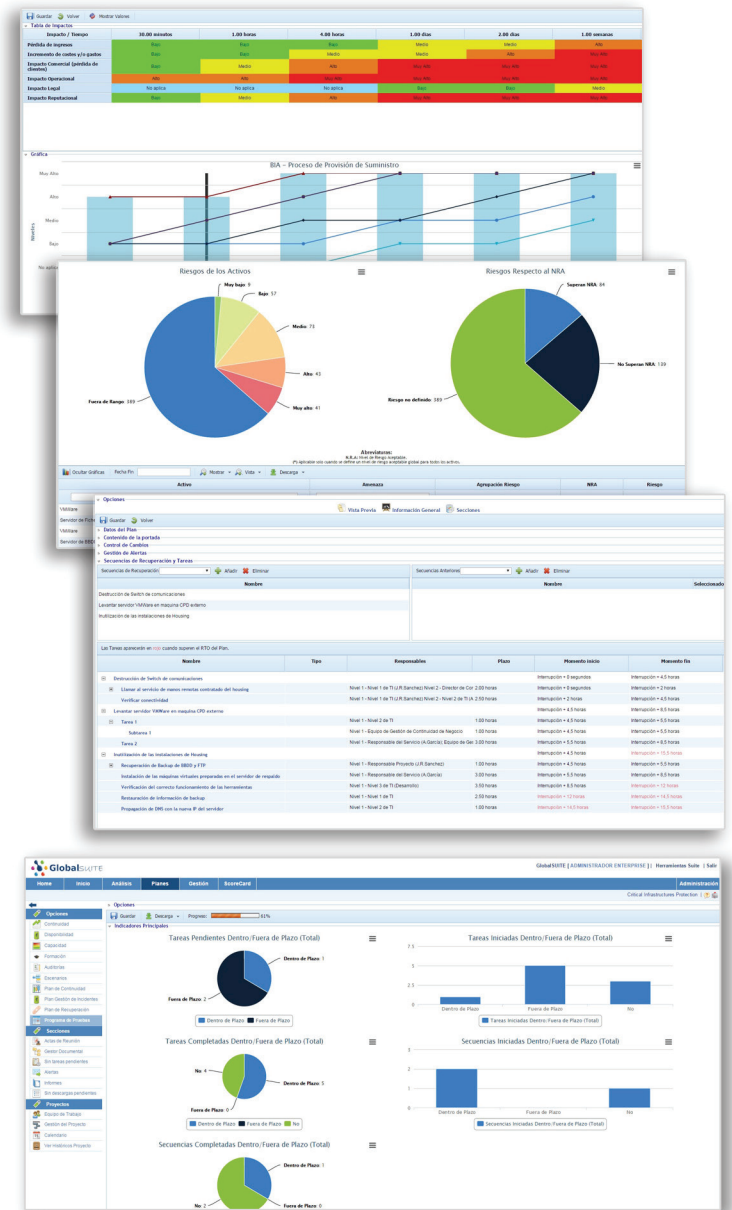
- Documentary structure by clauses & procedures
- Control of versions through the workflow
- Expandable capacity

Reports Management:

- Generation of Report templates
- Definition of Report format
- Use of tables & graphs of the platform

Project Management (for consultants firms):

- Coordination of Projects and work teams
- Project statistics (general status)



Know all advantages, functionalities & business possibilities that GlobalSUITE® - Critical Infrastructures Protection offers in our website www.globalsuite.es and each one of the integral solutions of GlobalSUITE®.